

Independent Practice

Determine the slope of the line $y = 5x + 10$

$$m = 5$$

Determine the slope of the line $y = -12x + 10$

$$m = -12$$

Easy

What is the slope of a line represented by the equation $2y = x - 4$?

$$m = \frac{1}{2}$$

What is the slope of the line whose equation is $2y = 5x + 4$?

$$m = \frac{5}{2}$$

Medium

What is the slope of the line represented by the equation $4x + 3y = 7$?

$$m = -\frac{4}{3}$$

What is the slope of the line whose equation is $3x - 7y = 9$?

$$m = \frac{3}{7}$$

Hard

Find the pair of equations with the same slope

(1) $-15y - 20x = 2$

(2) $3y = 4x + 2$

(3) $-20x + 15y = 2$

[A] (1) and (2)

[B] (1) and (3)

[C] (2) and (3)

[D] There are no parallel lines.

(1) $m = -\frac{4}{3}$

(2) $m = \frac{4}{3}$

(3) $m = \frac{4}{3}$

Mastery Level

Graph the following lines

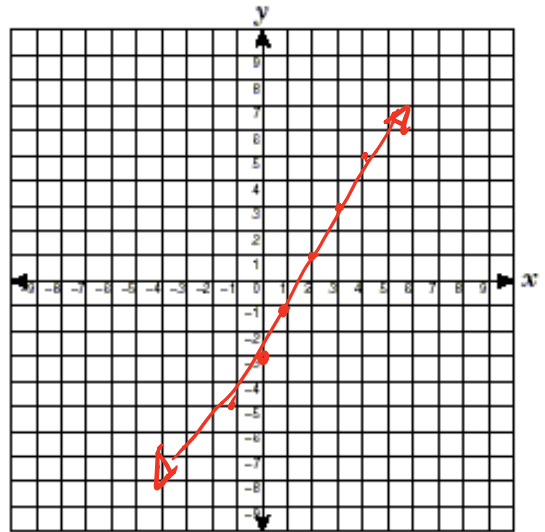
$$y = 2x - 3$$

State the slope:

2

State the y - intercept:

-3



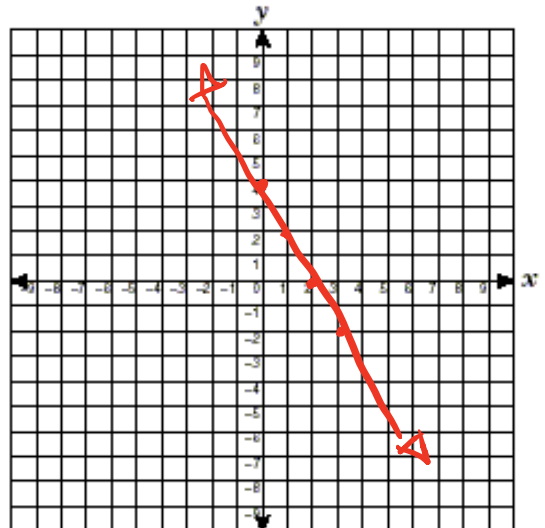
$$2x + y = 4$$

State the slope:

-2

State the y - intercept:

4



$$6x - 4y = 4$$

State the slope:

$\frac{3}{2}$

State the y - intercept:

4

